

HOLE	1	2	3	4	5	6	7	8	9	OUT	Int	10	11	12	13	14	15	16	17	18	IN	TOT	HCP NET
Gold 73.1/134	557	359	160	402	393	192	494	288	415	3260		386	518	387	425	176	450	214	390	542	3488	6748	Gold/Blue 72.3/132
Blue 71.2/130	539	344	148	368	352	180	472	274	384	3061		371	476	371	404	151	422	190	374	505	3264	6325	
White 69.1/127	521	325	136	349	319	165	454	259	366	2894		354	451	347	379	138	393	157	340	482	3041	5935	
Men's Handicap	2	16	18	6	12	14	10	4	8			11	3	9	5	17	1	15	7	13			
Par	5	4	3	4	4	3	5	4	4	36		4	5	4	4	3	4	3	4	5	36	72	
Green M: 66.3/117 W: 71.3/126	447	293	126	321	280	152	432	232	318	2601		327	411	299	343	127	346	128	326	448	2755	5356	
Red 69.1/119	420	271	102	296	252	119	410	221	295	2386		297	393	273	315	110	329	109	309	414	2549	4935	
Women's Handicap	4	8	18	12	16	14	6	2	10			1	9	13	7	17	3	15	5	11			

Scorer:

Attest:

Date:

© Golf ScoreCards, Inc.
1/2024 1-800-238-7267

USGA Rules Govern All Play
Except Where Qualified by Local Rules

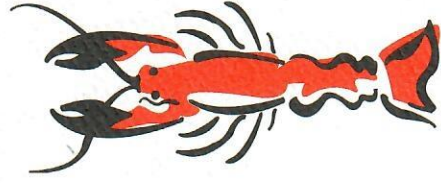
- Out of bounds defined by white stakes and the south edge of the entrance road on holes #4 and #5.
- Flower Beds - If a ball comes to rest in a flower bed, the ball must be dropped, without penalty, outside the flower bed, within one club-length. No Play Area.
- Relief must be taken if a player's ball lies on the wrong putting green. Rule 13.1f.
- Free drop is allowed from divots in the fairway on hole #8.
- Carts must remain on paths around tees, greens, and all Par 3 holes.
- Please repair ball marks on greens, rake bunkers, and sand divots.
- Sprinkler heads are measured to the center of the green. Granite markers are measured to the front, center, and back of greens.



STUART KRAMER
Head Golf Professional



CHRIS McCALLUM
Golf Course Superintendent



LAKE CHARLES
COUNTRY CLUB

~ EST. 1905 ~

LAKE CHARLES, LOUISIANA